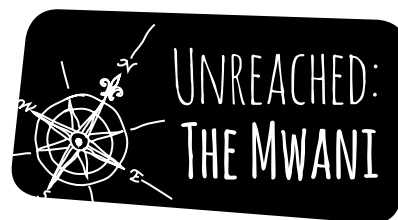


Africa Inland Mission's Prayer Sheets



003 - January 2018



Who are the Mwani people?

The Mwani live along the coast of northern Mozambique. Influenced by sea-faring Arab merchants centuries ago, their culture is defined by fishing and folk Islam. 'Mwani' literally means 'beach', and life is tied to the ocean. Most Mwani are very poor. Those who don't make their living through fishing will transport people by sea as well as trade, bake, and farm to support themselves. Peace, harmony, relationships, family bonds, and respect the elderly are highly valued by the Mwani. But divorce and polygamy are common, and many women have been married several times, so family units are often fragmented.



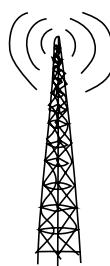
The word 'Mwani' means 'beach' in Kimwani.

Though fiercely Islamic, the Mwani are strongly influenced by mediums & witchdoctors.



What do they believe?

The Mwani have an awareness of God and are very aware of the supernatural world, believing in spirits and magic, and fearing demons. Though fiercely Islamic in name, their worldview is strongly influenced by the animistic world of ancestors and the use of mediums and witchdoctors. Women are more connected to the spirit world than men, and they hold 'punge' (séances) which can last all night. The Mwani have many ceremonies connected to the protection of their rice harvests from demons.



Radio Nuru is a Christian radio station, seeking to help reach the Mwani

What is being done to reach them?

Most Mwani are illiterate in the Kimwani language and speak only a bit of Portuguese but many listen to 'Radio Nuru', a Christian FM radio station broadcasting in Kimwani. Various teams have gone to the Mwani to reach them with the gospel. Steve and Sharon Entwistle have recently moved to Pemba to work among the Mwani and other unreached people groups in that area.



Watch a video: eu.aimint.org/mwani

Give thanks:

- * For the small number of Mwani believers.
- * For Radio Nuru and the impact that it has in the districts where it is broadcast. Give thanks too for its presenters who are keen to share the gospel.
- * That the translation of the Bible into Kimwani has been completed. Pray that the Mwani would have a real hunger and thirst for the Word of God.

Please pray:

- * That God would open the eyes and hearts of more Mwani to the gospel and that they would see the light and truth that the gospel brings.
- * That God would raise up people to go and live out the gospel among the Mwani.
- * That the Mwani believers would share the gospel with their own families and friends.
- * For the country of Mozambique, struggling with a poor road infrastructure that is often made worse in bad weather.

Who is AIM?

Africa Inland Mission is a missionary organisation that helps churches send gospel workers to work among African people. **TIMO (Training In Ministry Outreach)** is a two-year cross-cultural training programme to equip people for a lifetime of ministry.

If you are interested in going yourself, giving to help send gospel workers or want more prayer info, please contact us.

☎ **0115 983 8120** ✉ eu.aimint.org

✉ admin.eu@aimint.org



Christ-centred churches among all African peoples



aimurope